

**GA FLAT PLAN - UNIT\_1-08A\_M4(3)**  
Scale : 1 : 25

**RCP ELECTRICAL STRATEGY SYMBOL LEGEND**

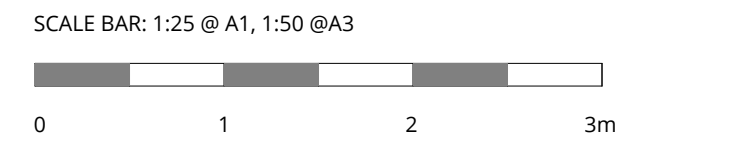
- Door Entry System with Video
- Door entry phone with remote door release
- Thermostatic heating control
- 1 Gang light rocker switch
- 1 Gang 2 way rocker switch
- 1 Gang 3 way rocker switch
- 2 Gang wide rocker switch (note: bathrooms contain a 2-gang switch one for the lights and one rocker switch for MVR boost @ 1150mm AFFL. See drawings 03660 & 03662)
- 3 Gang wide rocker switch
- Energy efficient batten fitting
- Recessed LED low voltage power downlighter
- Wall mounted fitting
- External sounder
- TV socket
- Pendant light fitting
- Shaver socket
- Double 13a switched socket outlet (note: switches on sides of plate)
- Double 13a switched socket outlet with USB outlets - refer to CP specification for details (note: switches on sides of plate)
- 45A Hob connection unit
- Unswitched fused connection unit for cooker hood
- Unswitched fused connection unit for undercupboard lighting
- 13A unswitched socket outlet for dishwasher
- 13A unswitched socket outlet for integrated fridge freezer
- 20A flex outlet plate for integrated oven
- Multi gang engraved switched fuse connection unit (above kitchen worktop)
- BT socket
- Fused spur, suitable for fitting of powered door opener, install 75mm above door opening to centre line of fused spur
- Media plate - refer to CP specification for further information
- 1 gang blank plate with provision for bedhead controls in the future - refer to drawing 03660, elevation 02
- Socket for Door Entry Phone with door release (suitable for table top handset)
- Towel radiator (note: controls to be between 700-1000mm above FFL)
- Radiator (note: controls to be between 700-1000mm above FFL)
- Ceiling mounted vent grille linked to fan unit
- Air Brick - Exhaust
- Air Brick - Intake
- High-level duct routes
- S = Smoke detector with sounder
- H= Heat detector with sounder
- Sprinkler head
- LED lights under the wall units (except under hood cabinet)
- Partressing requires on either one or both sides of the partition wall. Please refer to 03660 series for partressing details.

Notes:

- Do not scale from this drawing; work to figured dimensions only.
- All information is to be checked on site for accuracy and fit.
- Report any discrepancies and omissions to RMA Architects.

CDM ERIC Notes

- Where RMA services on a project do not include for site inspections and works surveys, RMA do not warrant that 'as built' issue drawings are a complete and accurate record of what has been constructed
- Unless notified specifically by the responsible party, changes made on site to RMA design information has not been incorporated in this drawing.



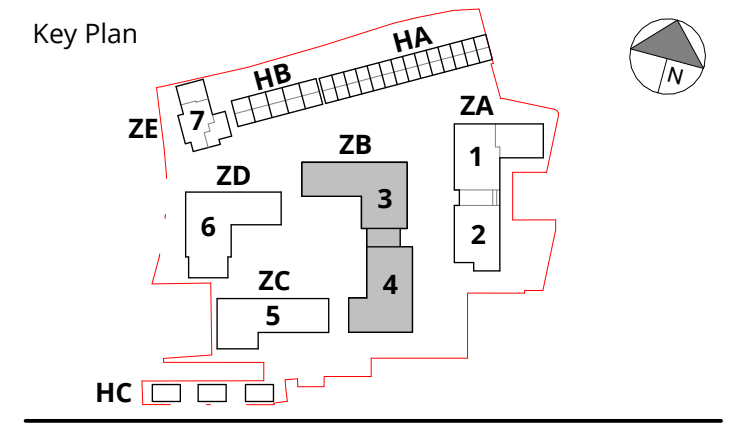
**GENERAL NOTES**  
All work to be to current British Standards, NHBC Technical Standards, Building Regulations. All products to have a use specific BBA Agreement certificate.

- Refer to other RMA drawings:
- 0000 BIM Models /2D - Strategy /Planning diagrams
  - 1000 GA Plans / GA Flat Layout
  - 1400 Fire strategy Plans
  - 2000 GA Elevations & Sections
  - 2400 Fire strategy Elevations
  - 3000 Detail Drawings
  - 4000 Lift and Stair core
  - 5000 Schedules
  - 6000 Bathrooms

Read in conjunction with other consultants information:  
**Brand Consulting** - for structural and civil information  
**MWL Group** - for MEP services & utilities information  
**LDA** - for external finishes and landscape information

Rev	Date	Description	By	Chkd
A1	20.06.25	AS BUILT	RR	JLee
C4	17.10.24	Storage Cupb Socket Omitted & Radiator Size Amended	JLee	MMc
C3	30.08.24	Updates to structural opening sizes for all internal doors	JR	JLee
C2	26.07.24	Level Access Shower & Screed Notes Added. Sockets & Drawing Key Updated	JLee	MMc

**RMA**  
 320C Highgate Studios  
 53-79 Highgate Road, London, NWS 1TL  
 London NW5 1TL  
 020 7284 1414, rmaarchitects.co.uk © RMA



Project  
**Marlowe Road Phase 2b&3**  
 RMA Project Reference 2226  
 Client

**COUNTRYSIDE**  
 Places People Love

Scale	Date	By	Checked
As indicated @ A1	DEC 22	JR	JLee

Drawing Title  
**ZONE ZB - BLOCK 4**  
**DETAILED FLAT PLAN**  
**UNIT 1\_08 - PRIVATE 1B2P - M4(3a)**

Purpose of Issue	Status Code
AS BUILT	A5
Drawing No	Revision
B00057- RMA- ZB- ZZ- DR-A- 01707	A1

**1-08 - PLOT NUMBERS**

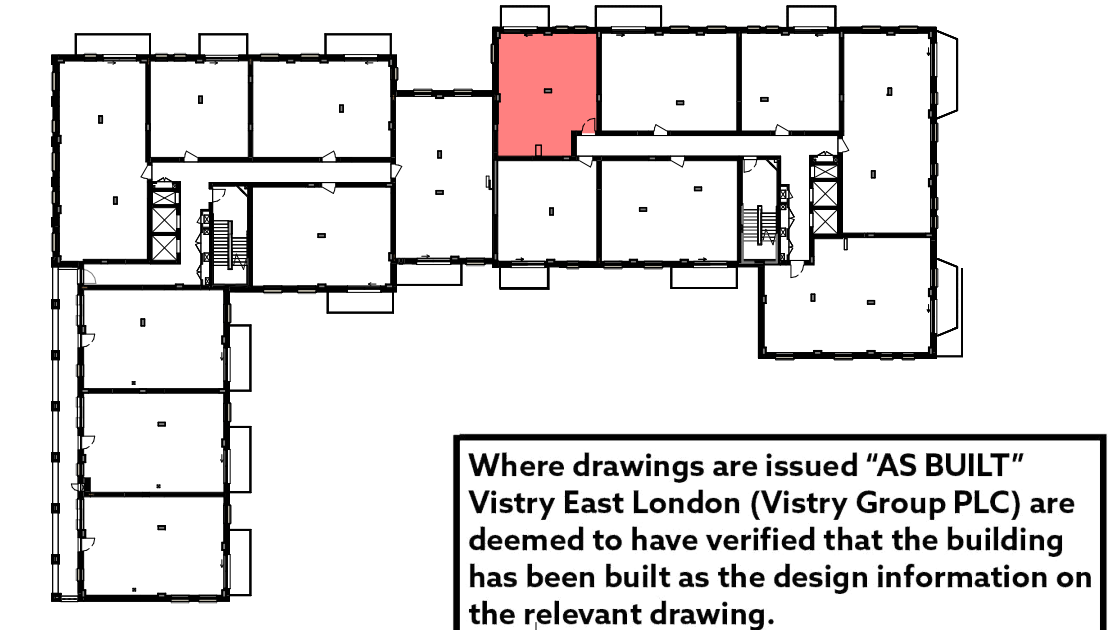
Flat Type	Plot Number	Level	Block/Building
1-08	137	FFL_01_B4	B4
1-08	144	FFL_02_B4	B4
1-08	151	FFL_03_B4	B4
1-08	158	FFL_04_B4	B4
1-08	165	FFL_05_B4	B4
1-08	171	FFL_06_B4	B4

**1-08 - UNIT TYPE**

Flat Type	NIA	Tenure	Occupancy	Area (sq-ft)
1-08	61 m <sup>2</sup>	Private Sale	1B2P WCH	654.9 ft <sup>2</sup>

**GA KEY**

Dimensions	Floor Tag
Dimension to finishes	(L1) LVT Flooring
Boxing Setting Out	(C1) Carpet Flooring
Dimension to internal walls (finish face to finish face)	(T1) Tile Floor
Dimension to electrical fixtures/fitings	(P1) Pavers to Amenity
Dimension to fire detection equipment	



Where drawings are issued "AS BUILT" Vistry East London (Vistry Group PLC) are deemed to have verified that the building has been built as the design information on the relevant drawing.

- NOTES**
- KITCHEN SOCKET SETTING TBC - AWAITING KITCHEN SUBCONTRACTOR DRAWINGS.
  - 63MM THICK SACRIFICIAL LINING TO KITCHENS - REFER TO DRY LINING DETAIL.
  - ALL RADIATORS' SIZES UPDATED PER MWL COMMENTS AND THEIR LOCATIONS (WHERE ACHIEVABLE) IMPLEMENTED PER COUNTRYSIDE REQUEST.
  - ALL MVR DUCTWORK ROUTES ARE INDICATIVE ONLY - BASED ON MWL LAYOUTS. FINAL ROUTES TO M&E SPECIALIST SUBCONTRACTOR DESIGN & INSTALLATION ALL SERVICES & CONTROLS TO COMPLY WITH BUILDING REGULATIONS AD PART M1, SECTION 3.44